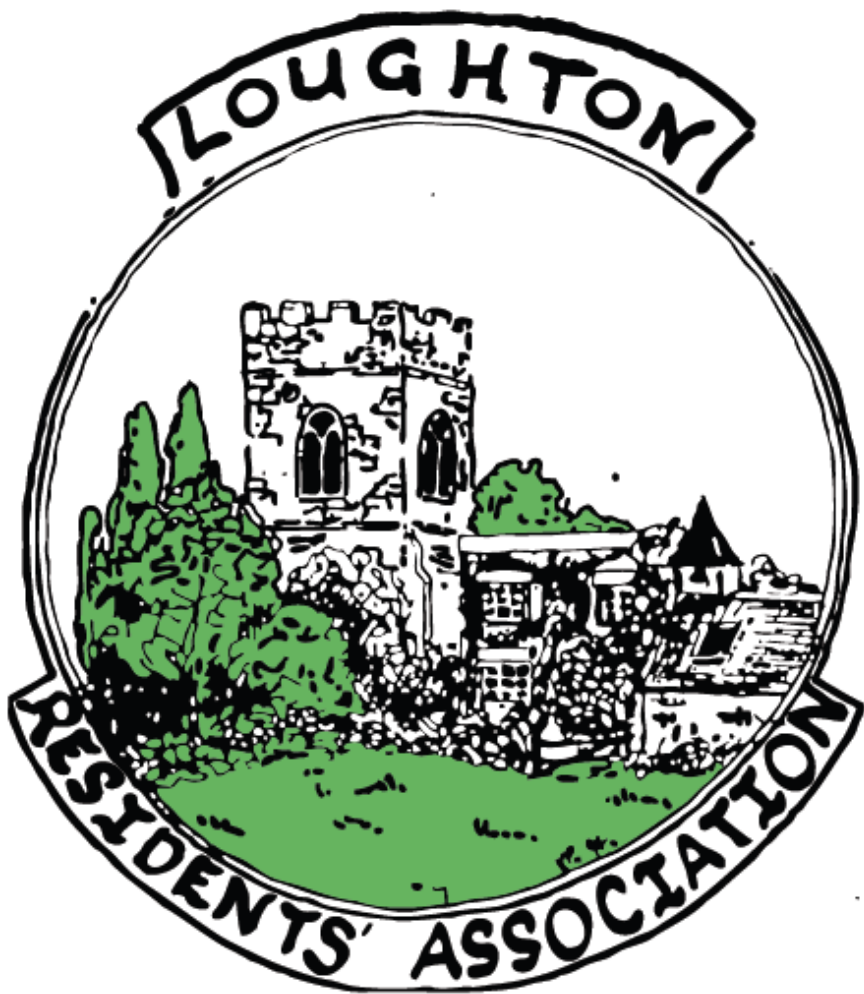


# NEWSLETTER



**No. 31**

**2024**

[www.loughtonmk.org.uk](http://www.loughtonmk.org.uk)



# Is it time for a new kitchen?

**KitchenSmart** has been designing and installing kitchens for the residents of Loughton for over 10 years and many of your neighbours will already be proud owners of a stylish and practical Schuller Kitchen.

With all our kitchens you will receive a fully project managed installation and excellent customer service.

We are also proud to be endorsed by Which? Trusted traders.



Please read our verified customer reviews  
[trustedtraders.which.co.uk](https://www.trustedtraders.which.co.uk)



**FREE!**

**QUOOKER TAP**  
WITH ALL FULL KITCHEN  
PURCHASES IN 2024  
WORTH £1300!  
EXCLUSIVE TO  
LOUGHTON RESIDENTS

Why not visit us at our showroom? We are only 5 minutes away in Linford Wood, or call us on **01908 798008** and we can arrange a meeting with one of our experienced designers, we look forward to hearing from you!



T: 01908 798008 E: [info@kitchensmart.uk.com](mailto:info@kitchensmart.uk.com)  
[www.kitchensmart.uk.com](http://www.kitchensmart.uk.com)

Unit 304 Milton Keynes Business Centre, Foxhunter Drive, Linford Wood, Milton Keynes MK14 6GD



## **Loughton Newsletter**

This newsletter has been produced on behalf of Loughton Residents' Association, for distribution to all residents within Loughton, Milton Keynes. Views expressed in this newsletter do not necessarily represent the views of the editor or of the Loughton Residents' Association committee.

A huge thank you to all of our contributors and advertisers.

If you have any comments, or wish to submit an article or advert (price on application) for inclusion in next year's newsletter, please contact the LRA committee (see p8 or via the website/facebook).

Please mention the Loughton Newsletter when supporting our advertisers – the revenue from our advertisers helps cover the printing costs for the Newsletter.

## **Table of Advertisers**

Kitchen Smart.....	2
Loughton Manor First School – May Fayre.....	15
Nurtureville Nursery.....	17
Scarecrow Trail – Bedtime Stories.....	24
Scarecrow Trail – Gardens required.....	25
Neath Hill Autos.....	28
Natura Gardening.....	30
Seps Mobile Hairdressing.....	31
Travel Treats.....	37
Tommy Flowers SCITT Teacher Training .....	39
Loughton Memorial Hall.....	42
Slimming World .....	44
Martin Clay – Carpentry, Joinery & Plumbing .....	44
The Print Cellar.....	46
Great Gelato.....	47
PandP Gardens.....	48

Funded by



## Contents

Loughton Newsletter .....	3
Table of Advertisers .....	3
Contents .....	4
Chair's Report .....	5
Secretary's Report .....	6
Treasurer's Report .....	7
Annual General Meeting .....	8
Loughton & Great Holm Parish Council .....	9
Loughton Manor First School .....	12
The Power of Horses .....	16
Loughton History .....	18
Thames Valley Police – Loughton update .....	20
Loughton School .....	21
Loughton Neighbourhood Watch .....	26
Milton Keynes City Council – Resident Engagement Team .....	27
Loughton Scouts .....	29
Would you like to contribute to the Newsletter? .....	31
Loughton Lodge District Girlguiding .....	32
Improving Biodiversity in Loughton .....	34
Denbigh School .....	38
Residents of Loughton - Get Involved! .....	40
Loughton Baptist Church .....	41
Shenleys and Loughton WI .....	43
All Saints' Church, Loughton .....	45

## Chair's Report

As I edit this edition 31 of the Newsletter I read about the events planned for the spring and summer in Loughton this year. This year there will be the Scarecrow Trail organised by the Scouts. I'm looking forward to seeing the imaginative interpretation of the theme.

There are lots of articles included in the newsletter from the various schools, clubs and churches in Loughton which I hope you will find of interest. If you have a topic that you think will be of interest to other residents get in touch with us and we can plan to include your article in the next edition.

I'd like to thank everyone who has been involved in producing the newsletter: the article writers, the volunteers who have helped with the delivery, and the LRA committee. I would also like to thank our advertisers for their contribution, without their support this Newsletter would not be possible. If you would like to advertise in future then please get in touch.

Our 'bronze' status was confirmed by the Resident Engagement Team in MK City Council in our 2023 Healthcheck. This provides us with some funding and access to grants that go towards the printing cost of this Newsletter and the Seasonal Card you received in December.



If you can spare a small amount of time and would like to get involved then it would be great to see you at one of our meetings.

*Rob Wills*

LRA Chair

## **Secretary's Report**

This year we continued holding meetings in All Saints Church and by Zoom. It was nice to see more residents attending and getting involved.

Loughton Residents Association has been persistent with the monitoring of and follow up local issues, some of which we have now had addressed. We will continue to do this together with the support of other areas of the Loughton community.

We continue to send out our seasonal card and newsletters to all Loughton residents. We get a good selection of photos sent to us of the local area by residents. To get all the cards/newsletters out would not be possible without all the help of residents who kindly volunteered, with the delivery. We would like to say thank you to them all.

Anyone can come along to our local meetings. It is nice to see residents who get involved in their local community and raise items which are often of interest or concern to others and help provide suggestions and share local topics. If you like to get involved either with helping with the seasonal cards or newsletters, litter picking, rewilding or just to find out what's happening in the area etc., please come along.

LRA meeting dates, and the resulting minutes are advertised on our LRA Facebook page. If you wish to be added to the mailing list, or have any questions, then please contact me on the following email address: [secretary.lra.mk@gmail.com](mailto:secretary.lra.mk@gmail.com)

We look forward to seeing you soon!

Andrea

LRA Secretary

## Treasurer's Report

	<b>2023</b>
<b>INCOME</b>	£
Bank interest received	21.37
Advertising Revenue 2023 Newsletter no 30	400.00
MK Council Community Grants	<u>1,525.00</u>
	<b>1,946.37</b>
<b>EXPENDITURE</b>	
To print 2023 Newsletter no 30	884.00
AGM and meeting expenses	60.00
To print Christmas card	429.00
Public liability insurance	128.80
Domain name registration	<u>14.39</u>
	<b>1,516.19</b>
Surplus for the year	430.18
<b>Balance sheet</b>	
Balance C/fwd at Lloyds Bank	5,840.57
Surplus on the year	<u>430.18</u>
Balance at Lloyds Bank at year end	<b>6,270.75</b>

Note: The 'MK Council Community Grants' figure includes £272 received in 2024 but which relates to 2023.

The late receipt arose due to an administrative error at MK Council which meant the grant was only partially paid in December 2023, and a corrective payment of the balance was made in January 2024.

Peter Woodruff  
Treasurer  
February 2024

# **Annual General Meeting**

Loughton Residents' Association

**7:30pm – 8:15pm on Thursday 16<sup>th</sup> May 2024**

All Saints' Church

## **AGENDA**

1. Review of Minutes of previous AGM
2. Election of Officers
3. Loughton issues
4. Any other business

Followed by a speaker: TBC

Do you have views on any topics that would be of general interest to residents of Loughton? Are you interested in issues concerning Loughton and would like to have a voice?

Everyone who supports the Loughton Residents' Association is a volunteer. If you would like to get a bit more involved we would love to see you.

Committee Members 2023/2024:

Chair	- Rob Wills	- chair.lra.mk@gmail.com
Vice Chair	- vacant	- vicechair.lra.mk@gmail.com
Secretary	- Andrea Phillips	- secretary.lra.mk@gmail.com
Treasurer	- Peter Woodruff	- treasurer.lra.mk@gmail.com

Committee: Barry Anderson, Elaine Anderson, Janet Cooper, Rachael Bunting, Sam Jeffs, Lisa Harvey-Bain.





## **Loughton & Great Holm Parish Council**

### **2023/2024 News**

I was delighted to be elected Chair of the Loughton and Great Holm Parish Council in May 2023. I hadn't ever stood as Chair although I have been a member of the Parish Council since 2013 and in recent years deputy chair. I'm grateful to Akash Nayee for chairing the Parish Council so ably for the last four years.

We are supported by the Parish Clerk, Paula Milford who lives in the Parish and will be known to many residents and continues to provide the Parish with expert assistance. We also employ two excellent local residents who help with waste and maintenance.

The Parish elections last year, at the end of our four-year term, saw a number of experienced councillors standing down and brought some new faces onto the Council. I wanted to thank past parish councillors who have taken on this voluntary role in our community and given freely of their time. I extend a warm welcome to our new parish councillors who are already making a difference as well as thanking those who have been re-elected. You can read all about your parish councillors and more on the Parish website [Loughton and Great Holm Parish Council – Parish Council \(loughtonandgreatholm-pc.gov.uk\)](http://loughtonandgreatholm-pc.gov.uk)

### **Finance**

Our finance and staffing committee, together with a full council plan and set our annual budget for the 2024/2025 Council year.

With 2271 Band D properties in the Parish, and a precept requirement of £104,272, the Parish precept has been set at £45.91 per Band D property. This is an increase of £2.25 per annum per band D property from the previous year. The Loughton and Great Holm Parish sets one of the lowest

precept rates in Milton Keynes, per household, so we are committed to continue offering residents good value through landscaping, providing dog bins, local initiatives, future projects and more. Total income for 2024-2025 is projected at about £140k. Full details of the budget are available on the Parish website- address above.

Loughton and Great Holm Parish remains one of the lowest precept rates in Milton Keynes per household and we are committed to continue to offer residents good services and good value. We provide additional landscaping, planting and the dog bins, review all planning applications in the parish, provide two allotment sites, host activities and warm spaces for residents in the parish, especially the elderly and children and young people, as well as managing our two buildings, the Loughton Pavilion and the Great Holm community centre for the benefit of our residents.

### **Loughton Pavilion and Great Holm Community Centre**

The Parish Council took over ownership of Loughton Pavilion and Great Holm Community Centre from the Milton Keynes City Council some years ago in order to ensure they could be put to best use for local residents. We installed solar panels and batteries on both buildings with 50% grants from Milton Keynes City Council, to make sure we can keep costs as low as possible for everyone using them. We have replaced the fence when it has been repeatedly damaged in Loughton and the sports field there is maintained on our behalf by local teams who are using the pitch. We have installed EV chargers in the car parks with grants from the City Council.

The Grumpy Cook café rent the majority of the building and the Parish hold coffee mornings here twice a month which are well attended and much enjoyed. Westbury Arts Centre continue to display their artwork on the walls of the café for everyone to enjoy. The Parish is delighted to see “The Grumpy Cook” develop into the community café we once hoped would be possible when we took on the building.

At Great Holm the preschool is the main tenant at the Great Holm community centre providing good services to local families. The building is

also frequently used for evening classes, workshops, private parties and Parish activities. We have introduced a range of extra parish activities for local residents this year, which have been a huge success and are planning more in future.

## **Landscaping**

The responsibility for maintaining the landscape in the parish is either the responsibility of the Parks Trust or Milton Keynes City Council depending on who owns the land. There has recently been a change of provider for this service by Milton Keynes City Council so, at present, it has not been possible to fund any extra work in the Parish as we have done in previous years. It is still our intention to work closely with the City Council, and where we want to particularly improve the local environment to invest some Parish funding. We have been delighted with some small projects, planting wildflowers and trees to increase biodiversity in our Parish.

We are also very pleased to have the interpretation board installed in Church Walk.

## **Allotments**

The Parish council continues to manage and run two allotment sites, both in Loughton. We have a new allotment management committee to better represent allotment holders and improve the sites.

Please look at our website for more information [Loughton and Great Holm Parish Council – Parish Council \(loughtonandgreatholm-pc.gov.uk\)](http://loughtonandgreatholm-pc.gov.uk)

**Councillor Zoe Nolan**

**Chair Loughton and Great Holm Parish Council**

11<sup>th</sup> February 2024



## **Loughton Manor First School**

***'Building a lifelong love of learning in a safe and happy school'***

Loughton Manor First School serves children aged from three in our Nursery class, up to the age of seven in Year 2. The stages of learning are called the Foundation Stage (3 to 5 years) and Key Stage One (5 to 7 years). After this, our children move on to junior school. Throughout everything we do, we embed our ethos by creating a thirst for learning in our children through the wide and exciting range of experiences we offer them.

We continue to have hardworking staff and governors who are fully committed to the wellbeing of our children, and we feel grateful to have such supportive families working alongside us. We continue to try to support our families in need, and once again at Christmas, we were able to create and deliver 26 food hampers to families within our school community – made possible by donations from families, and a grant from the Hugh Parke Trust, as well as grants made by some parents. We have continued to run our own Food Bank, and with the generosity of one of our parents, we are now able to provide fresh food on a weekly basis to our families who need it.



Our Friends Committee continues to raise money to support us and always organises fun activities for the children, for example, discos, 'Break the Rules!' days and our Christmas Shop, which takes a huge amount of

commitment and preparation, but are much-loved by our children, which makes it well worth the effort. Our largest event is our May Fair which will take place on Saturday 11<sup>th</sup> May and is open to the community, so everyone is welcome. Once again, MK Brass joined us to add some wonderful music to this family event.



We have used the money raised on funding Christmas parties and subsidising annual school visits. If you would like to see further information about how our 'Friends of Loughton Manor' support our school or what their money is spent on, please see their website:

[www.friendsofloughtonmanor.co.uk](http://www.friendsofloughtonmanor.co.uk)



The year 2023 was a year of celebrations at Loughton Manor. In May we celebrated the Coronation of King Charles III by wearing red, white and blue and having a street party. This really was a celebration fit for a king!

In September 2022 Loughton Manor First School was officially 25 years old. We celebrated in July 2023 as we wanted to have special outside celebration at school, and had wanted to aim for lovely weather! We had a family picnic which was accompanied by MK Brass and we invited ex members of staff to attend too. As part of our 25<sup>th</sup> anniversary celebration we created a very special mosaic designed by Sarah Harper from Honey Mosaics, using drawings of animals created by the children. This work was supported by funding from MK Community Foundation and Friends of Loughton Manor First School.

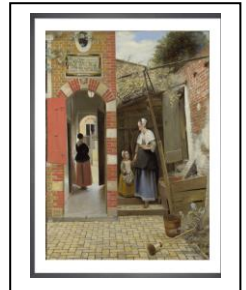




In December we held our annual Family Christmas Carol Concert at Christ the Cornerstone Church. We are so grateful to be able to use this beautiful building each year, and as always it was well attended by many of our families. We are also grateful to MK Brass who support us at this event by accompanying the children's singing.

In December our long standing nursery teacher, Jeanette Holland retired. She worked at Loughton Manor First School for many years and has played a huge role in the first experiences of education for hundreds of children over the years. Although she will be greatly missed we wish her a very happy retirement.

During last half term we had our annual Expressive Arts Week in which we focussed on the painting, '*The Courtyard of a House in Delft*' by Pieter de Hooch. The children created a wide range of art using this painting as a basis. We used all of the work produced to put together an art exhibition and invited families in to see it.



If you are interested in seeing what our school has to offer, or would like to find out more about our school, please do visit our website:

<https://www.loughtonmanorschool.co.uk/>

If you have any further questions, please contact me at school on 01908 241472.

Best wishes,

Daniela Thompson  
Headteacher



Sponsored by:  
**CHRIS DURRANT**  
 exp uk  
 Personal Estate Agent

# May Fayre

Saturday 11<sup>th</sup> May 12:00 - 15:00



## Games & Prizes

**RAFFLE** 😊 Facepainting

**TOMBOLA** ⚙️ **BBQ** 🌸 **CAKES**

**MK BRASS BAND**

**Saturday 11<sup>th</sup> May**

12:00 – 3:00 PM

Free entry for children / **£1** per adult

**Loughton Manor First School**

Paynes Drive, Loughton | MK5 8FA

Poster design by Elena V Miller @valeraiillustrates





## The Power of Horses

### RIDE HIGH

Ride High is a local charity based on Redland Drive that uses horses to effect positive change in disadvantaged young people in Milton Keynes and the surrounding areas.

2023 has been a year of growth, with Ride High increasing the intake of children to 120 per week. During the summer, local organisations helped design and create a new community sensory garden, that is also accessible to beneficiaries and those of other local charities and organisations.

We launched the ‘Hobby the Horse’ scheme, a free programme for schools designed to complement the KS1 curriculum. Children create hobby horses out of recycled materials and host a sponsored fundraising event. Thank you to Loughton Manor First School for taking part and raising nearly £300!

Ride High has many fundraising events on offer in the coming year. There are spaces available for the MK Marathon weekend in May and the Cycle Challenge will be returning on 9th June with 25, 50 and 100 mile routes available.

If you would like to support Ride High whether that be volunteering, attending an event, fundraising or donating please visit: [www.ridehigh.org](http://www.ridehigh.org)





Nurtureville  
Nursery



We have spaces available.

**Please call Clair on 01908 397400 to find out more.**



Parents are more than welcome to come and look  
around our beautiful nursery.

**A 'home from home' environment for your child.**

28 Bradwell Rd, Loughton, Milton Keynes, MK5 8AJ

## Loughton History

### The Wheatsheaf, Leys Road Loughton

Ever since I moved to Loughton in 1989 I have sought to find out more about The Wheatsheaf and its origins. Back in 1989 it was the Wheatsheaf stores. But the store closed around 1994. There were stories of it being a public house but little evidence of this. Most old maps I have found do not show it as a public house or inn, why is this?



The Wheatsheaf Stores.

After becoming a private residence, one previous owner felt the wrath of the local council when he painted a large George Cross on the white rendering during the football World Cup. The amusing part of this story was that by the time legal papers were raised, as it was a listed building, the tournament was over and the building had been repainted.

The earliest indication it was an Inn comes from 1852 when a Samuel Harris was listed as the Licensee.

In April 1856 it appeared in the Bucks Advertiser and Aylesbury News as a Free House up for auction.

Move forwards to 1873 and the Bucks Herald of 2nd of August reports that Thomas Morton applied for a Publican's Licence for The Wheatsheaf on the 16th of July that year.

The photo below is from the Milton Keynes City Discovery Centre (MKCDC) site from the Maurice T. Kitchener collection.

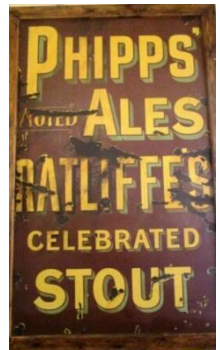
<https://catalogue.mkcdc.org.uk/content/kitchener-photo/the-wheatsheaf-public-house-loughton>

It shows the pub sign on the front of the building. The Kitchener collection is from circa 1925-1951 I have spoken to various people in the village, the building was definitely no longer a pub after the early 1950's.



A rare photo of The Wheatsheaf as a Pub.

The sign on the pub is for Phipps, a Northampton brewery and Ratcliffe's Stout. Phipp's and Company acquired Ratcliffe's Brewery in 1899. So the sign would be post 1900.



The last reference I have found for The Wheatsheaf, with the help of a few others, is from the Wolverton Express of 22nd April 1949. It details the temporary transfer by Phipps and Co, of the licence from Edwin John Kitchener to Peter Henry Hill for the Wheatsheaf, Loughton.

Next time you walk past take a second to think about those who lived there, worked there and the changes The Wheatsheaf has seen.

I would be interested if anyone has any further information about the Wheatsheaf's past or further tales from its time as a pub or shop. One last question remains, when did it close as a pub?

Dave Harris



## Thames Valley Police – Loughton update

### Loughton Park Police Team

PCSO Paul Allan, PCSO Megan Shaw & PC Zoe Randolph – Loughton Park Neighbourhood Team.

They currently patrol 15 estates across the north of Milton Keynes - from Milton Keynes Bowl, to Loughton Park and estates in-between, including Whitehouse Park and Fairfields.

The team attend incidents that include, but not limited to, patrolling the neighbourhoods; tackling anti-social behaviour in the area; offer crime prevention advice; work with the local schools, work with partner agencies and safeguard vulnerable individuals in the communities.

Overall the crime in the area is fairly low. Top reported crimes are violence & sexual offences, anti-social behaviour, public order and vehicle crime. Priority has been drug dealing and related issues and the Team will continue to conduct regular patrols and liaise with relevant parties and instigate crime reduction solutions.

### Contacting the Police:

If you witness any anti-social behaviour or suspicious activity that is not an emergency, please call 101 or report it via the Thames Valley Police web site.

If your call is an **EMERGENCY dial 999**.

If you want advice or would like to contact the neighbourhood Police team, please call us on the Police **NON-Emergency number 101** or by email at: [MKNorthCluster@thamesvalley.pnn.police.uk](mailto:MKNorthCluster@thamesvalley.pnn.police.uk)

If you have information about crime or Anti-Social Behaviour in your area, but do not want to speak to the Police, please call **Crimestoppers Charity on 0800 555111**.

Information about your neighbourhood team is available on the TVP website at: [www.thamesvalley.police.uk](http://www.thamesvalley.police.uk)

If you wish to receive free local crime alerts, crime prevention advice and road closure alerts, either join your local Neighbourhood watch scheme at [www.ourwatch.org.uk](http://www.ourwatch.org.uk) or go to [www.thamesvalleyalert.co.uk](http://www.thamesvalleyalert.co.uk) and sign up.



## Loughton School

We continue to strive to be the very best at educating the whole child, no matter their background or starting points, to ensure that every child in the Loughton School family learns the skills and knowledge they need to be ready to move on in the journey of their education as life-long learners.

We are always pleased to be able to offer a variety of different trips, visits and workshops to provide an exciting addition to classroom learning. Visits to the library, Bletchley Park and Bradwell Abbey have already taken place, with a day out to The Tower of London for year 3 children planned in the spring. Many workshops, covering different styles of dance and music, a visiting planetarium, pizza making and the Zoolab have been enjoyed by our children.



Zoolab  
visitors  
included  
Bullseye  
Giant  
African Land  
Snail and  
Darth Vader  
Scorpion



Over the summer, we installed a brand new, fully functioning school kitchen which is operated by a new lunch provider who prepare, make and serve a choice of fresh meals daily; this has been a fantastic addition for Loughton School.

During the autumn term, we saw a huge increase in the amount of sporting activities made available to children across the whole school - basketball, cross country, dodgeball, football, netball and tag rugby. Some children have taken part in trials and gone on to represent the school against other local schools.

In September, we took two groups of year 6 children away on residential visits. One group travelled to Chanteraine in France. Another group opted to remain closer to home to take part in an action-packed few days at Kingswood, where they did ziplining, archery, raft-making and competed in a very wobbly crate-stacking challenge!



In December, our children in years 4 and 5 put on an incredible performance of Primary School Musical. Parents were invited to share in their children's efforts.



In January a large group of our singing children visited Birmingham where they took part in an exciting annual event - *Young Voices*. They had been practicing and rehearsing for several months before they donned their green glitter cowboy hats and joined many other schools from all over the country.

Throughout the year we have held many fundraising events, including cake sales, frozen Fridays, a break the rules day, which was lots of fun alongside supporting our local food bank and Comic Relief. At Christmas time our annual 'Giving Tree' was surrounded by gifts kindly donated, which were passed onto less fortunate families.

Lastly we've been delighted at just how many parents and carers joined us when we invited them in so that we were able to share information about our curriculum, SATs and SRE – this is all very encouraging; knowing that they can continue supporting their child's education journey.





# Loughton Scarecrow Trail

## Bedtime Stories

Saturday 15<sup>th</sup> –  
Sunday 23<sup>rd</sup>  
June 2024

✉ [Roger.Wood@MKScouts.org](mailto:Roger.Wood@MKScouts.org)



Organised by  
Loughton Scout Group



Loughton Scarecrow Trail





# Loughton Scarecrow Trail Gardens Required

Do you like the idea of joining in with the Scarecrow Trail, but don't want the hassle of building your own Scarecrow?

Why not host one for somebody else!

In every Scarecrow Trail there are applicants from parts of Loughton that are not on one of the Trail routes or people from outside of Loughton who wish to join in our great event.

If you would be willing to help by providing space in your front garden for a Scarecrow, then please email [Roger.Wood@MKScouts.org](mailto:Roger.Wood@MKScouts.org)



Organised by  
**Loughton Scout Group**



**Loughton Scarecrow Trail**



## Loughton Neighbourhood Watch

Neighbourhood Watch is about people getting together with their neighbours to take action to reduce crime.

Neighbourhood Watch schemes are community initiatives owned and run by their members. They work by developing a close relationship between community members and the local police.

Neighbourhood Watch schemes can:

- cut crime and the opportunities for crime
- help and reassure those who live in the area
- encourage neighbourliness and closer communities

Thames Valley Police are very committed to Neighbourhood Watch Schemes as with residents, the local Police Community Support Officers and police working together; the opportunities for crime to occur can be greatly reduced.

There is crime prevention advice available –  
<https://www.thamesvalley.police.uk/advice>

to help reduce your chances of becoming a victim of burglary.

How to join a Watch scheme:-

Go to <https://www.ourwatch.org.uk/> to find out what groups are active in your area and to register to join.

You can also find and contact your local Neighbourhood Watch Association or Scheme Coordinator via the same website for:

- more information on how the scheme works
- the benefits of the scheme
- advice on running a scheme in your local area

To access Neighbourhood Watch resources, visit [Neighbourhood Watch on Thames Valley Alert](#) to register.

## Milton Keynes City Council – Resident Engagement Team

Have you heard about the Resident Engagement team at MKCC?



We create opportunities for council tenants, leaseholders and residents associations in MK to get involved and make a positive difference to the Council's housing service.

We need more local people's help to develop a range of exciting new projects and initiatives.

If you'd like to get involved, please contact us on 07484 911780 or [residentengagement@milton-keynes.gov.uk](mailto:residentengagement@milton-keynes.gov.uk).

Joining your local Residents Association is also another great way to make a positive difference, in your community.





 **RMI** A Member of the Retail  
Motor Industry Federation



Driver & Vehicle  
Standards  
Agency

### *Call in to see us*

Why not stop by  
with your vehicle?  
One of our qualified  
technicians will be  
on hand to help you.

MOT Tests

Car Servicing

Tyre Fitting

Suspension Repairs

ECU Diagnostics

Brake Safety Check

Free Exhaust Check

## **Neath Hill Autos:**

**01908 233533:**

7 Tower Crescent, Neath Hill, MK14 6JY

E: [info@neathhillautos.co.uk](mailto:info@neathhillautos.co.uk)

W: <http://www.neathhillautos.com>





## Loughton Scouts

Scouts is the UK's biggest mixed youth organisation. It changes lives by offering 6 to 25 year-olds fun and challenging activities, unique experiences, everyday adventure and the chance to help others so that they make a positive impact in communities. We are a thriving group based in Loughton.

The age groups are as follows:

6-8 years	Beaver Scouts
8-10.5 years	Cub Scouts
10.5-14 years	Scouts
14-18 years	Explorer Scouts
18-25 years	Network Scouts

Young People take part in activities as diverse as kayaking, abseiling, expeditions overseas, photography, climbing and zorbing. You can learn survival skills, first aid, computer programming, or even how to fly a plane – or sleep under one on one of our sleepovers at an RAF base! There's something for every young person. It's a great way to have fun, make friends, get outdoors, express your creativity and experience the wider world.

**The Scout Movement is not just for our young people; ADULTS can join Scouts, become a Leader or volunteer in any of the sections and enjoy all aspects of Scouting. We also offer volunteering opportunities for the Duke of Edinburgh scheme.**

The Scout Association helps volunteers get the most out of their experiences at Scouts by providing opportunities for adventure, learning, fun and friendship.

For further information about Scouting in Milton Keynes, including the waiting list for places, please email [rosemary.rowcroft-james@mkscouts.org](mailto:rosemary.rowcroft-james@mkscouts.org)





*Natura*  
GARDENING  
LANDSCAPE &  
DESIGN



**ENQUIRE  
TODAY**  
TO SECURE OUR  
AVAILABILITY

## WHAT MAKES US DIFFERENT?

**Natura Gardening** is a Loughton (Milton Keynes) based team that is passionate about helping you to achieve the garden of your dreams.

We specialise in biodiversity and sustainability, and are proud to have planted over 200 trees in Loughton.

## OUR SERVICES

- Garden Planning & Maintenance
- Soft & Hard Landscaping
- Turf & Hedge Planting & Care
- Wildlife Habitat Creation
- Ethical Waste Management
- Eco-friendly Pressure Washing



### CONTACT US

FOR A FREE CONSULTATION

 07934 873 088

WE ARE OPEN TO BOTH LONG AND SHORT TERM PROJECTS

## Would you like to contribute to the Newsletter?

### Articles

Would you like to write an article about a topic that would be of interest to other residents of Loughton? Please get in touch with Rob to register your interest: [chair.lra.mk@gmail.com](mailto:chair.lra.mk@gmail.com)

### Advertising

Are you a local business and would like to put an advertisement in the newsletter next year? Please get in touch with Peter to register your interest: [treasurer.lra.mk@gmail.com](mailto:treasurer.lra.mk@gmail.com)



# Seps

*Mobile Hairdressing*

**07836-715548**

email: [x2seps@googlemail.com](mailto:x2seps@googlemail.com)

Have your hair styled in the  
comfort of your own home

# Loughton Lodge District Girlguiding



**Girlguiding**  
Milton Keynes division



For ages 4 to 7

Rainbows welcomes all girls to come together to laugh, learn and have fun in a creative, safe space. It's a wonderful world of adventure, week after week, just for her.



Brownies is full of firsts: she can explore her creative side, get out into the great outdoors, learn how to look after herself, others and the world we live in.



For ages 7 to 10



For ages 10 to 14

Guides is a fun-filled space, she'll have one big adventure with friends, learn how to be herself, explore the things she loves and do stuff she's never done before!



Rangers is an open and relaxed space, where you can regularly meet up, go on trips at home and abroad, to help make a difference to the things you care about.



For ages 14 to 18

Find a group near you [girlguiding.org.uk](http://girlguiding.org.uk)

Registered charity number: 1026890





**Girlguiding**  
Milton Keynes division

# ▶ Volunteer with us



We open up a **world of possibilities** to girls from 4-18-years-old, one where they **can do anything.**

**It's totally flexible,** you can help as much or as little as you want.

Join us for nonstop fun, learning and adventures.

**Your local Girlguiding group needs:**

We are looking for adult volunteers across Milton Keynes, to support existing units and open new groups in areas where there are long waiting lists. Can you make a difference?



**Register today**



[girlguiding.org.uk/volunteer](https://girlguiding.org.uk/volunteer)

Registered charity number: 1026890

## Improving Biodiversity in Loughton

2023 was the hottest year on record and the news on the nature front is grim – 97% of our meadows gone, butterflies down by 46%, insects down by 60%. 47% of UK biodiversity lost ....

So what have we been doing in Loughton to help nature recover and to address climate change on a local level?

- **195 Woodland Trust saplings planted in our Parish in 2023!** Denbigh School pupils planted 90 saplings - 30 in March in the Millennium Meadow, in Church Walk and at Great Holm Community Centre and 60 in November at Ride High, the children's charity. The Parish Council also organised the planting of 105 Woodland Trust saplings along Lincslade Grove and Leys Road in November. 15 volunteers from the MK Veterinary Group helped us plant these saplings.



Planting Woodland Trust saplings with MK Veterinary Group volunteers Nov 2023

- **Biodiversity trial** - We set up a local trial to improve biodiversity - the Parish Council agreed to 3 verges and 2 meadows in Loughton being left uncut during the summer. These areas were cut in September and volunteers raked up the risings (a mammoth task!). The Parish Council and MKCC have agreed to extend the trial to another wide verge on Lincslade Grove in 2024.
- Fellow campaigner Thomas and I surveyed local residents in August 2023 in order to get community backing for the trial - there were 100 responses. **75% of these local residents want the spraying of**

**glyphosate (Roundup) to stop in our parish. 85% responded positively to our trial to improve biodiversity locally.**

- Biodiversity is firmly on our Loughton and Great Holm Parish Council agenda - we now have an environment working group, which is drafting a **Climate Action Plan**
- The Parks Trust agreed with the Parish Council **not** to spray around trees in Loughton Valley Park Summer 2023
- The Parks Trust has invested £8000 in wildflower seeds for Loughton Valley Park - sown last Autumn under the trees. Look forward to a wonderful display this summer!
- A large area of Parks Trust managed land between Lodge Lake and Bradwell Abbey was left unmown all Summer 2023
- We moved 10 self seeded Loughton Heritage Damson trees from a hedge, which was due to be flailed, to new locations in the village where they can hopefully flourish.
- Last winter our volunteer group stripped overpowering ivy off black poplars, ancient oaks, crab apple trees, cherry trees in Loughton. The resultant blossom display at Pirates Park was breath taking in Spring.



Crab and cherry trees in their full glory at Pirates Park April 2023

So, what are we doing next?

- Loughton School Council is planning to sow wildflower seeds in the Millennium Meadow behind Bradwell Road in April 2024, with Parish Council support.
- André Cilliers, from MK Veterinary Group, is donating 4 very rare black poplars to Loughton. (There are also 3 magnificent mature native black poplars in Leys Road next to the brook, I am trying to get them formally recognised).
- Local residents, Thomas Humphries and Rob Lock, are replanting the 9 planters outside Loughton School and the verges outside Nurtureville Nursery - with bees and butterflies at the heart of their efforts. The Parish Council is providing funding for the plants and materials.
- We will continue to campaign to stop the spraying by MKCC contractors and The Parks Trust of Roundup (glyphosate) on soft landscaping, on soil, under hedges, around signs.
- We will collate a list of ancient, significant or just special trees in our Parish. Our mature trees need far more protection!

Finally, the new MKCC Sustainability Strategy, presented by cabinet on 6 February 2024, states:

Renewed approach to landscaping and environmental management across the borough incorporating multiple public land stakeholders such as Parish & Town Councils, The Parks Trust and the community sector. Increased biodiversity with a phased approach to changing embedded horticultural practices in consultation with residents.

*Very good news!*

Please get in touch with your ideas and comments, and with your offers to help our action. And please support NO MOW MAY!

Judith Heinemann

Biodiversity Campaigner and Parish Councillor Loughton and Great Holm

[judith.heinemann@loughtonandgreatholm-pc.gov.uk](mailto:judith.heinemann@loughtonandgreatholm-pc.gov.uk)



# LUXURY

## ESCORTED EXCURSIONS & HOLIDAYS FROM MILTON KEYNES

We have some **wonderful trips**  
and we look forward  
to welcoming you



With  
surprise  
treats



Please check our website  
or call us for an up to date list of current events:

[www.traveltreats.co.uk](http://www.traveltreats.co.uk)

T: 01908 676 742 E: [janet@traveltreats.co.uk](mailto:janet@traveltreats.co.uk)

Travel Treats, 8 Little Meadow, Loughton, Milton Keynes, MK5 8EH.



# TRAVEL *treats*





DENBIGH SCHOOL

**Denbigh School**



## **Students join with Woodland Trust to plant trees in Loughton & Great Holm**

Students from our five House Councils have been planting trees supplied by the Woodland Trust in the Loughton and Great Holm area. This on-going project has allowed our students to make a positive contribution to their local area and has been organised by Judy Heinemann, a much-loved former teacher of ours.

Year 9 and 10 students spread some community Christmas cheer when they delivered hampers put together by our tutor groups to residents of Petworth House and Radcote Lodge. It was a lovely community event with the students and residents having a chance to chat and get to know each other a little. This came after the success of our Christmas Bazaar which has become a popular local community event. Our tutor groups put on 48 stalls with games and prizes for all. We raised £5,500 at the event for the Denbigh Association and our chosen House Charities.



Sixth Form students pictured here, experienced the trip of a lifetime through World Challenge this summer when they visited Ecuador to trek in the Andes Mountains and work on a marine conservation project.

Denbigh's talented Debate Team won the MK Schools Parliamentary Debate Competition which is organised by local MPs, Iain Stewart and Ben Everitt. The

final was held in the Houses of Parliament and the students debated whether AI is an opportunity or threat following on from the AI Safety Summit held at Bletchley Park this year.

Our students have excelled in recent sporting competitions. Our Cross Country team are MK Schools Champions, our Year 8 and 9 Girls and Boys Badminton teams are North Bucks Champions and our Sixth Form Girls Football Team are MK Champions.

Female Design Technology students were inspired by a visit to Niftylift to take part in a 'Women in Engineering Event'. The event offered students an opportunity to learn about the different career paths available within the field of engineering and the work undertaken at Niftylift. Denbigh has close links with Niftylift through which they promote STEM subjects and careers with students.

Byron Highton, founder of the JJ Effect, a prominent anti-knife crime charity has been speaking to students across the school about the dangers of carrying weapons. Hearing from Byron speak from personal experience about loss caused by knife crime has been very impactful for our students as he urged them to choose empathy over violence.

**THE TOMMY FLOWERS SCITT**

# Train to teach in MK

## Primary & Secondary

### QTS/PGCE

**Tuition-fee QTS only**  
This 10 month course gradually builds up your teaching to award Qualified Teacher Status.

**Tuition-fee QTS with PGCE**  
As well as QTS, this route awards a Post Graduate Certificate in Education.

**Post Graduate Apprenticeship**  
Our employed 12-month route is for candidates with an employing school and prior experience.

**Ofsted**  
Outstanding Provider

**01908 669735 ext. 320/353**

**tommyflowersscitt.co.uk**

**SCAN ME**

## **Residents of Loughton - Get Involved!**

Do you have any views on local topics that would be of interest to the residents of Loughton? Are you interested to find out what is happening in your local area?

If the answer is yes, then here are some ways you can get involved!

### **Meetings**

Come along to a meeting, all Loughton Residents are welcome. We meet at All Saints Church (or by Zoom in the winter) and discuss all the current local issues & events. Agenda or minutes are available from the Secretary.

### **Facebook**

For updates on meeting times & more, please go to our LRA Facebook page:

[www.facebook.com/LoughtonResidentsAssociation](http://www.facebook.com/LoughtonResidentsAssociation)

or the Loughton Community (Milton Keynes) Facebook page:

<https://www.facebook.com/groups/2175383349439749/>

### **Contact Details:**

Chair	Rob Wills	<a href="mailto:chair.lra.mk@gmail.com">chair.lra.mk@gmail.com</a>
Vice Chair	vacant	<a href="mailto:vicechair.lra.mk@gmail.com">vicechair.lra.mk@gmail.com</a>
Treasurer	Peter Woodruff	<a href="mailto:treasurer.lra.mk@gmail.com">treasurer.lra.mk@gmail.com</a>
Secretary	Andrea Phillips	<a href="mailto:secretary.lra.mk@gmail.com">secretary.lra.mk@gmail.com</a>

**We look forward to hearing from you!**





LOUGHTON BAPTIST CHURCH

## Loughton Baptist Church

**We warmly invite you to join our Services and Activities.**

Our weekly **Sunday Services** are held at **10.30am** in person and online.  
Children's and Youth activities available.

Easter Service times are on our website.



### English Classes

**Thursdays 7pm**

Come and improve your speaking and listening skills. £10 per term.

### Scarecrow Stop Saturday 22<sup>nd</sup> June

Come and stop by as you follow the Scarecrow Trail.  
BBQ, refreshments, bouncy castle, children's activities and much more!



### Over 50's Rendezvous

**Second Wednesday of the month at 2pm**

You are invited to join us for worship, fun and refreshments.

**Contact the Church Office to find out more!**

**Website:** [www.loughtonbaptistchurch.org](http://www.loughtonbaptistchurch.org)

**Email:** [office@loughtonbaptistchurch.org](mailto:office@loughtonbaptistchurch.org)

**Phone:** 07901 132 846

**If you declare with your mouth, "Jesus is Lord,"  
and believe in your heart that God raised him from the dead,  
you will be saved. *Romans 10:9***

# **LOUGHTON MEMORIAL HALL**

**Bradwell Road, MK5 8AJ**



## **HALL FOR HIRE**

**GREAT FOR CHILDREN'S PARTIES,  
CLUBS, GROUPS & MEETINGS**

**ONE OFF, WEEKLY OR MONTHLY  
BOOKINGS AVAILABLE**

**Refurbished hall, clean & welcoming**

**Entrance area & side room**

**Kitchen facilities**

**Free parking**

**Storage facilities for regular groups**

**Bookings and Enquiries: 07582 956808**

## **Shenleys and Loughton WI**

We meet every second Tuesday of the month at 2.30 pm in the Loughton Memorial Hall.

Last year we had a very varied programme with interesting talks like Moths and Bees, with a chance to purchase honey and products made from Bees Wax. We had afternoons with exercises such as sit and fit and Morris dancing which caused a lot of laughter with aches and pains, we also had craft afternoons which involved decorating cupcakes and making cards . In August we went to Kathy Brown's Garden in Bedford where we enjoyed tea and very tasty cake.

This year we have another interesting programme to look forward to and we have already enjoyed a Beetle Drive and next month we have a talk from Dr Dave Gregory Baptist minister for Science and the Environment 'Reach for the Moon'. Over the rest of the year we will have other talks on a wide range of topics from Medical Detection Dogs to Eco-Print. We will also have an outing in August and finish the year with a Christmas afternoon tea.

If you would like more information please contact either Barbara Goodman President Tel: 01908 526242 or Sarah Sorrell Secretary 07731876102. You are welcome to come to a couple of meetings before you need to commit to joining the Woman's Institute so why not give us a try.

Lose Weight



Men Welcome

£5.95  
Weekly

Cash or cheque payments only

Half price  
Membership £5

Contact Ann on: 01908 505943 or 07714 037832

Tuesdays at: Oak Tree Centre  
Wallinger Drive  
Shenley Brook End

3.30pm, 5.30pm and 7.15pm



Martin Clay

Carpentry

Joinery & Plumbing



[www.martinclay.co.uk](http://www.martinclay.co.uk)

kitchens, bathrooms, doors, wardrobes,  
wood flooring, plumbing.

[martincarpentry@outlook.com](mailto:martincarpentry@outlook.com)

Tel: 01908 314843 mob: 07785 710676

Gathering our wits after Covid has been a testing time. Whatever people think about the restrictions and vaccinations, so much of our regular social interaction, even regular day-to-day stuff was all upside-down. Now when someone tells us they have the lurgy, somehow, we just carry on. I suppose it is a testament to our medical and pharmaceutical teams who have offered us the ability to ... get a cup of tea and carry on.

Our two morning services are now every Sunday – 8am *Book of Common Prayer* Holy Communion, and 10am Morning Service, with Communion on the second and fourth Sundays the month. We've welcomed quite a few babies to baptism and you will have seen weddings back in church. We're always delighted to welcome people in to this ancient, yet ever new, space at All Saints'. If you'd like more information about baptism or a wedding, please let us know.

Our online Night Prayer continues every Sunday at 8pm on Facebook Live. For those who'd prefer to pray with us at another time, it's on our YouTube channel (Watling Valley Partnership) and on our website. This is an open invitation to join in as and when you please. This short devotional service is led by a variety of our members across the Partnership who share with us a few moments of encouragement and quiet prayer. One of the strengths of this short service of devotion is the wide range of people who lead and the variety of ways in which we are engaged.

The bells are ringing regularly again, and we're very pleased about that. We've hosted a few bell-ringers from other areas and we're pleased that our team of ringers, supported and encouraged by Gary (Tower Captain), are a feature of the Loughton soundscape again. If bell-ringing is something you'd like to know more about, please get in touch and we'll be pleased to arrange an introduction.

Most of our usual activities are now in place, especially our continued prayers for all the people of Loughton and the Watling Valley, no matter your circumstances. If you like to meet a few new people, we continue our Saturday morning coffee online (using Zoom). We meet from 10am till

about 11am from home. You can find out more about this and our regular and continuing activities by checking the Watling Valley Partnership website [www.watlingvalley.org.uk](http://www.watlingvalley.org.uk). If you'd like to speak to a minister or know more about our activities at All Saints' please contact me by email on [barry.lotz@watlingvalley.org.uk](mailto:barry.lotz@watlingvalley.org.uk) or by phone on 01908 33 6885. If you'd like to contact our Church Wardens, they are David Thom ([david.id.thom@gmail.com](mailto:david.id.thom@gmail.com)) and John Rowcroft-James ([john@wvep.org](mailto:john@wvep.org)). You can also find out about all our activities by phoning our administrator, Liz Morris in our Partnership office (Monday to Friday 9:30 to 11am) on 01908 50 4452. You can also follow us on X (formerly Twitter) @WatlingValley and you can follow us on Facebook to see what's happening.

Barry Lotz



# The Print Cellar

Woburn Sands

A quick, friendly, and competitive printing service  
from your local Social Enterprise organisation.

Small and large quantities all possible.

For a quote or arrange a meeting please call or email

Tel: 01908 587329

Email: [hello@theprintcellar.co.uk](mailto:hello@theprintcellar.co.uk)

[www.theprintcellar.co.uk](http://www.theprintcellar.co.uk)





Obviously we have our handcrafted gelato, but have you tried our **focaccia sandwiches...?**

📍 11 Islay Court, **Newton Leys, MK3 5QW**

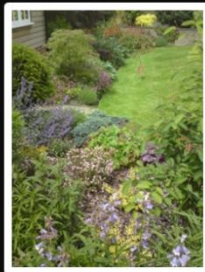
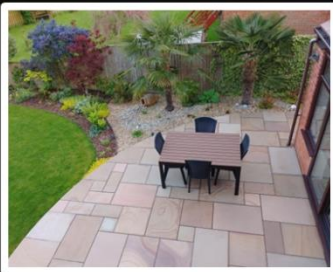
📍 47 High Street, **Stony Stratford, MK11 1AA**

**GREATGELATO.COM**



 **P & P**  
*Gardens*  
*Design - Construction - Planting*

Experts in design, planting, porcelain & natural stone paving.



For a **Free**, no obligation, initial garden visit and quotation, call us on 01908 678396 or for more information visit:

[www.pandpgardens.co.uk](http://www.pandpgardens.co.uk)

